

imagePRESS  
C850 C750 C650

**Canon**  
Delighting You Always

# THE FUTURE



**NEW LEVELS OF QUALITY AND  
PRODUCTION IN COLOUR PRODUCTION**

# BRING

# IT ON

Business *can* be simple



# COLOUR WITHOUT COMPROMISE

## IT'S YOURS

**Colour consistency means compromising on productivity, right? Not anymore.** The latest imagePRESS features Auto Correct Colour Tone (ACCT) for multidimensional mixed colour calibration.

This allows colour adjustments to be made on a wider range – keeping the colour consistency, accuracy and quality all at the highest possible level.

What's more, AGA (Auto Gradation Adjustment – the C850/750/C650's easy-to-use colour calibration tool) reduces your calibration times, assuring perfect colour correction for even-more-guaranteed consistency on images and text.



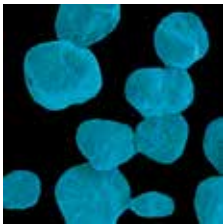
# HIGH QUALITY FOR ALL PRINTS

## CONSISTENTLY VIVID (CV) TONER FOR COLOUR

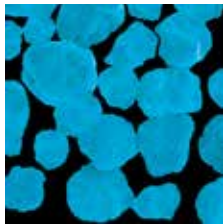
**CONSISTENCY** CV toner is Canon's newly developed toner, which delivers higher quality print combined with high speeds of up to 85 ppm. The new para-shell structure, ultra-fine toner particles and the toner's smooth surface, it's improved toner transfer efficiency for enhanced colour consistency and accuracy across a wide variety of media, including embossed and rough paper surfaces for custom and premium applications.

The efficient toner transfer reduces toner wastage, energy consumption and paper deformation. CV toner features a broad colour spectrum for rich and vivid colours that will produce high quality marketing materials and the right colour on all your corporate documents. It has a gloss optimisation technology allowing a high gloss finish on coated media and a matt finish on plain/low gloss media.

The enhanced developer unit is designed to cool the internal temperature and maintain high quality image in heavy duty environments. All these new features mean delighted customers willing to grow their business together with yours.



V Toner

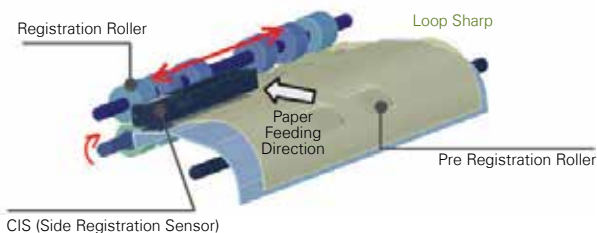


New CV Toner

## COMPACT REGISTRATION TECHNOLOGY (CRT)

Compact and highly accurate registration technology assures best-in-class results whether printing 1 sheet or thousands. The CRT combines digital sensors together with registration rollers to ensure that every single sheet is correctly positioned during print runs and that the image is placed in the same location on every sheet, for the highest quality results every time. This new technology also provides full control of the registration process, allowing you to satisfy the needs of even your most demanding customers.

### COMPACT & HIGH ACCURATE REGISTRATION MODULE

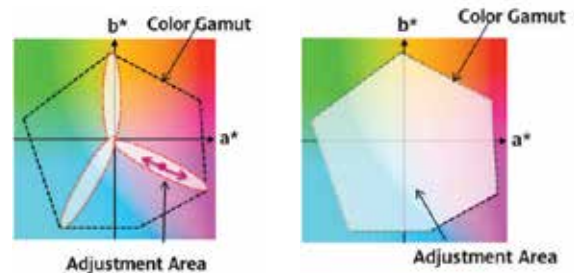


Skew and side registration correction mechanism

## ENHANCED COLOUR CALIBRATION

Auto Correct Color Tone (ACCT) is the technology to get mixed colour back to initial condition based on values that are registered in the first ACCT at installation executed by service technician. For the first time in a Canon light production device, multidimensional mixed colour calibration (rather than CMYK single colour calibration). As the previous Auto Gradation Adjustment (AGA) focuses correcting single colours.

Auto Correct Color Tone can cover other colours that are not corrected by Auto Gradation Adjustment. A Special chart to be measured by reader is prepared for ACCT. This allows to make colour adjustment with a wider colour gamut that printer can reproduce.



Auto Gradation Adjustment (AGA)

Auto Correct Color Tone (ACCT)

## VIBRANT IMAGES

The imagePRESS C850 series feature a 32 beam Vertical Cavity Surface Emitting (VCSEL) laser unit with multi-exposure technology that achieves an exceptional 2,400 x 2,400 dpi resolution – enabling even higher precision in the printing of text and images, while supporting high productivity. Image distortion compensation improves digital scale up and down so operators can easily adjust and correct images, including fan correction.

This new technology also allows operators to choose from a selection of the most versatile screen patterns available. They can select either new dot-screen patterns for optimised quality closer to offset or line-based patterns for even a larger choice.

These screen patterns can optimise the quality of any print application and, as a result, deliver the most stunning images that your customers will love and pay a premium for high-value applications.

### BETTER HANDLING OF TEXTURE MEDIAS



Other brand printer



imagePress C850/C750/C650

# MAXIMUM PRODUCTIVITY

## IMPRESSIVE PRODUCTION SPEEDS

The Advanced Twin Belt Fusing unit is high production speeds of up to 80 ppm are possible on a wide range of media. The imagePRESS C850/C750/C650 is capable of running at maximum speed on heavy stock up to 220gsm and on uncoated stocks it offers exceptional production speeds. It achieves this outstanding productivity thanks to the innovative Induction heating technologies that heat up the fusing belt quickly and efficiently and the improved belt cooling system. The imagePRESS doesn't sacrifice quality for productivity and these impressive speeds will increase the productivity of your print room and allow you to meet your customer's demand, increase customer loyalty and grow your business.

## AUTO DUPLEX SUPPORT

Duplex printing is in high-demand amongst print professionals as this opens up revenue opportunities, especially for heavyweight stocks. With a compact and efficient path design, the imagePRESS C850/C750/C650 lets you quickly and effortlessly produce duplex print jobs on heavy weight media up to 300 gsm, with highly accurate front to back registration. Thanks to this technology, the imagePRESS C850/C750/C650 delivers a better performance and gives you the opportunity to handle more demanding jobs without manual intervention and impact on your print room productivity.

# VERSATILE MEDIA HANDLING

## WIDE RANGE OF APPLICATIONS

The most outstanding and eye-catching applications depend on the creativity and the material used for the job, which includes a mix of different substrate. The imagePRESS C850/C750/C650 has been designed to provide you with outstanding performance and impressive media handling. The Elastic Intermediate Transfer Belt – which increases toner transfer efficiency, including on textured or recycled paper – the imagePRESS C850/C750/C650 can handle heavyweight stocks and produce extensive applications ranging from leaflets to the highest-quality brochures and other marketing communications that will give you and your customer the return on investment desired.

## ADVANCED FEEDING TECHNOLOGY

The imagePRESS C850/C750/C650 features a new multi-drawer paper deck with enhanced air separation technology and optimum roller pressure, which handles a wide variety of media and prevents multi feeds even of coated stock. This new piece of technology can blow air at different speeds based on the type of paper and weight, virtually eliminating paper jams and significantly increasing your print room's efficiency and productivity.





# THE PERFECT CHOICE FOR EVERY PRINT ENVIRONMENT

The innovative imagePRESS C850/C750/C650 has been designed to meet all the challenges of the colour production market. Ideal for busy CRD and GA environments, the imagePRESS C850/C750/C650 combines exceptional image quality with powerful productivity and offers the versatility to create extensive and innovative applications across a wide range of media, including heavyweight coated stocks and envelopes.

It can flexibly handle everything from short runs to complex variable data printing for personalised print communications – all within a small but scalable footprint. And with extended finishing capabilities and fast turnarounds it's the perfect choice to help you meet every print challenge. Plus it offers an excellent return on investment – bringing time and cost savings to demanding CRDs and revenue generating opportunities to Graphic Arts environments.



# HEAVY MEDIA

**Different customers want different things.**

And with the imagePRESS C850/C750/C650, you can make sure they get what they want – right across a wide range of applications and substrates.

The imagePRESS C850/C750/C650's Elastic Image Transfer Belt (an additional elastic layer on top of the base belt material) delivers the best results in its class – even with challenging media such as heavy-structured media.

So whether you're printing leaflets or standard-sized envelopes, high-quality brochures or long sheet, 762mm auto-duplex banners – the imagePRESS C850/C750/C650 is up to the job.

# LIGHT WORK





# SEE THE DIFFERENCE TAKE A LOOK

## HIGHLIGHTS OF THE imagePRESS C850/750/650

In-line and 3rd party finishing for dynamic and impressive applications

11

Wide range of applications including brochures, envelopes and project folders

10

the imagePRESS C850 | C750 | C650 is up to the job

# REFERENCE

range of applications,  
duplex banner a  
ropes for new ideas  
cts



12

Scalable small  
footprint that suits  
any environment

7

Choice of innovative  
workflows that suits  
all ways of working,  
including the new  
PRISMAsync







- 1 Consistently Vivid (CV) toner for vividly crisp images
- 2 R-VCSEL technology provides clear, crisp 2,400 x 2,400 dpi output at high speeds
- 3 190 lpi dot-screen pattern for offset-like prints
- 4 Compact Registration Technology (CRT) – one of the best one in its class
- 5 Advanced Twin Belt Fusing unit for the highest productivity, including mixed-media up to 85ppm
- 6 Enhanced colour calibration & Multi D.A.T. II for consistency and accuracy, from the first to the last print, even on long runs
- 8 Elastic Image Transfer Belt for versatile media handling, including heavy-structured media
- 9 Exceptional uptime to achieve maximum print room performance

# SERVER SPECIFICATIONS

Basic Configuration	imagePRESS Server H300	imagePRESS Server G100 V1.2	PRISMAsync iPR C850 Series A-1
Server Type	External	Embedded	External
Processor	Intel® Core™ i5-4570S 2.9 GHz up to 3.6 GHz w/Turbo	Intel® Pentium® G850 2.9GHz	Intel® Core™ i5-4570S 2.9 GHz up to 3.6 GHz w/Turbo
Memory	2 x 2GB DDR-3	1 x 2GB	1 x 8GB DDR-3
Hard Disk Drive	1TB, 2.5 inch	500GB	2 x 500GB
Resolution	1,200 x 1,200dpi, 600 x 600dpi		PS / PDF: 600 x 600dpi or 1,200 x 1,200dpi, transactional PCL: 600 x 600dpi, transactional IPDS: 600 x 600dpi
Network Interface	DVI connector Ethernet 1000 Base-T / 100 Base-TX / 10 Base-T	DSUB 15pin connector Ethernet 1000 Base-T / 100 Base-TX / 10 Base-T	DVI connector Ethernet (10 / 100 / 1000 Base-T), USB for files via operator panel
Network Protocol	TCP/IP, AppleTalk (only support font downloader), Bonjour, SNMP, IPP, FTP, SMB, IPv6, WSD (minimum support to achieve WHQL certification)	TCP/IP, AppleTalk (only support font downloader), Bonjour, SNMP, IPP, FTP, SMB, IPv6, WSD (minimum support to achieve WHQL certification)	TCP/IP, including static / auto IP (DHCP), SNMP v1/ v2c/ v3, Host resources MIB, System group MIB II, Printer MIB, Job Monitor MIB submission via lpr, hotfolders, socket, SMB, IPP, JDF/JMF (via adapter).
Standard / Optional	imagePRESS Server H300	imagePRESS Server G100 V1.2	PRISMAsync iPR C850 Series A-1
Fiery System	Fiery System 200	Fiery System 150	PRISMAsync Mark V
Graphic Arts Feature Set V2.0	Included	Included	
SeeSequence Suite / Impose / Compose	Optional		
Graphic Arts Package, Premium Edition	Optional	Optional	
Removable HDD Kit-B1			





**MAIN UNIT - GENERAL SPECIFICATIONS**

Technology	Colour Laser Beam Printing
Resolution	Up to 2400dpi x 2400dpi
Colour Gradations	256 per colour
Registration Tolerance	Front to Back: 1.0mm or less
Print Speed	<b>C850-</b> up to 85pp/min <b>C750-</b> up to 75pp/min <b>C650-</b> up to 65pp/min
Paper Size	13" x 19.2", SRA3, 12" x 18", 11" x 17", LGL, LTR, LTRR, EXEC, Irregular Size (182mm x 182mm to 330.2mm x 487.7mm)
Paper Weight	52 to 300g/m <sup>2</sup>
Paper Capacity	<b>Standard Option</b> 3 x 550-sheet cassettes (52-220 g/m <sup>2</sup> ) 100-sheet multi-purpose tray (80 g/m <sup>2</sup> ) <b>POD Deck Lite-C1</b> 1 x 3500 sheets side paper deck (A4/A3/SRA3) <b>Multi-drawer Paper Deck C1</b> 1 x 6,000 sheets (3 x 2,000 sheets - A4/A3/SRA3)
Max Paper Input Capacity	7,650 sheets (A4/A3)
Max Paper Output Capacity	11,200 sheets (A4/A3)
Supported Media Types	<b>Cassettes</b> Thin paper, Plain paper, Recycled paper, Colour paper, Heavy paper, Pre-punched paper, Bond, Letterhead, Tab paper* Transparency, Envelopes** <b>Multi-purpose tray</b> Thin paper, Plain paper, Recycled paper, Colour paper, Heavy paper, Coated paper, Pre-punched paper, Tab paper, Bond, Transparency, Label, Envelopes, Letterhead <b>Optional Paper Deck</b> Thin paper, Plain paper, Recycled paper, Colour paper, Heavy paper, Pre-punched paper, Coated paper, Textured, Bond, Transparency, Label, Letterhead, Tab paper***, Envelopes
Supported media sizes	<b>Paper cassette 1, 2 &amp; 3</b> <b>Standard size</b> A4, A4R, A5R, A3, SRA3, 13"x19" (330 x 483 mm) <b>Free size</b> 100 mm x 148 mm to 330.2 mm x 487.7 mm <b>Multi-purpose tray</b> <b>Standard size</b> A4, A4R, A5R, A3, SRA3, 13"x19" (330 x 483 mm) <b>Free size</b> 100 x 148 mm to 330.2 x 487.7 mm <b>Envelopes</b> No.10 (COM10), Monarch, ISO-C5, DL
Supported media weights	<b>Cassettes</b> 52 to 220 g/m <sup>2</sup> <b>Multi-purpose tray/ Optional Paper deck</b> <b>Duplex</b> 52 to 300 g/m <sup>2</sup> 52 to 300 g/m <sup>2</sup>
Warm Up Time	Approximately 360 seconds
Interface type	USB 2.0 Hi-speed <b>Ethernet Standard</b> 1000 BaseT/100Base-TX/10Base-T 2 x USB Host
Network protocols	TCP/IP* (LPD/Port 9100/WSD/IPP/PPS/SMB/ FTP), IPX/SPX (NDS, Bindery), AppleTalk
Processor speed	1.66 GHz (SOC ARM 1136JF-S 400 MHz ARM 946 200 MHz)
Memory	1.5GB (SOC 2GB)
Hard Disk Drive Standard	1TB Hard Disk Drive
Control panel	<b>EFI/Canon PS/PCL</b> Upright Control Panel G1: 26.4 cm (10.4 inch) TFT SVGA LED Backlight Colour Uplight Touchscreen <b>PRISMAsync</b> Operating Panel-A4: 15 inch touch panel screen
Dimension	(W x D x H) 1,952 mm* x 934 mm x 1,424 mm**
Min Installation space	1,952mm (W) x 1,624mm (D)
Weight	Approx 316kg *includes ADF
Operating environment	Temperature- 20 to 27°C (50 to 86°F) Humidity- 15 to 60 % RH (no condensation)
Power Source	220-240 V (±10 %), 50/60 Hz (±2 Hz), 13AMP x 2
Power Supply Consumption	<b>Max</b> Approx 1,560W (at power supply) or less + 2,500W (at fusing unit) or less <b>Standby</b> Approx. 1.0Wh or less <b>Sleep mode</b> Approx. 1.5Wh or less
Typical Electricity Consumption rating (TEC)	9.9kwh in imagePRESS C850/C750 85ppm/75ppm 8.9kwh in imagePRESS C650 65ppm
Noise Levels Sound Pressure	<b>Active</b> 75dB or less <b>Standby</b> 56dB or less

\* Requires Tab feeding attachment  
\*\* Requires Envelope feeding attachment  
\*\*\* Requires Multi Drawer Paper Deck C1  
\* IPv4/IPv6 support  
\*\* Includes Operator Panel and Output tray option  
\*\* Includes Operator Panel Height to ADF is 1,222.2mm

**FINISHER W1 / BOOKLET FINISHER W1 [PRO SERIES]**

Tray Capacity	<b>Upper Tray</b> 1,000 sheets <b>Lower Tray</b> 4,000 sheets <b>Saddle Stitch Tray</b> 30 Booklets or Limitless <b>Staple Positions</b> Corner, Double <b>Paper Weight</b> 52 to 300 gsm [Cover]
Paper Size	<b>Stapling</b> Executive, Letter-R, Letter, Legal, 11" x 17" <b>Saddle Finisher</b> Letter-R, Legal, 11" x 17", 12" x 18", 13" x 19", Custom Size <b>Staple Capacity</b> Up to 100 Sheets <b>Booklet Stapling Capacity</b> Uncoated: Up to 25 Sheets Coated: Up to 15 Sheets V Folding: Up to 5 Sheets without Stitch W1 & W2: 800 mm x 792 mm x 1,239 mm W1 - Approx. 130 kg W2 - Approx. 180kg
Dimensions	(W x D x H)
Weight	

**FINISHER - T1/SADDLE FINISHER - T1 [ Light series for iPRC750 & C650 only ]**

Tray Capacity	<b>Upper Tray</b> 1,000 sheets <b>Lower Tray</b> 2,000 sheets <b>Saddle Stitch Tray</b> 30 Booklets or Limitless <b>Staple Positions</b> Corner, Double <b>Paper Weight</b> 52 to 300 gsm [Cover]
Paper Size	<b>Saddle Finisher</b> Letter-R, Legal, 11" x 17", 12" x 18", 13" x 19", Custom Size <b>Staple Finisher</b> Executive, Letter-R, Letter, Legal, 11" x 17" <b>Staple Capacity</b> Up to 50 Sheets <b>Booklet Stapling Capacity</b> Uncoated: Up to 16 Sheets Coated: Up to 5 Sheets V Folding: Up to 5 Sheets without Stitch 800 mm x 792 mm x 1,239 mm Approx. 130 kg / Approx. 180kg
Dimensions	(W x D x H)
Weight	

**BOOKLET TRIMMER F1 Requires Booklet Finisher**

Trim Width	2-20mm
Trim Thickness	Up to 50 sheets (includes Cover)
Acceptable Paper Weight	52 to 300g/m <sup>2</sup>
Dimensions	(W x D x H) 1,575mm x 770mm x 1,040mm
Weight	Approx 152 kg

**TWO-KNIFE BOOLET TRIMMER A1 Requires Booklet Trimmer**

Trim Width	2-15 mm
Trim Thickness	Up to 50 sheets (includes Cover)
Acceptable Paper Weight	52 to 300g/m <sup>2</sup>
Dimensions	(W x D x H) 536 mm x 770 mm x 1,040 mm
Weight	Approx 145 kg

**DUPLEX COLOR IMAGE READER-K1**

Image Sensor	CCD
Document Size	Statement to 11" x 17"
Resolution	600 x 600 dpi, 256 Gradations
Scan Speed	<b>300 dpi</b> 200 <b>600 dpi</b> 120
	<b>BW (duplex)</b> 140 <b>Color (duplex)</b> 70

**PUNCH UNIT BT1/BU1 Requires Booklet Finisher W1 or Finisher W1**

Punch Hole type	<b>BT1</b> 2 holes and 4 holes (FRN) selectable, <b>BU1</b> 4 holes (Swe)
Acceptable Punch Paper Weight	52-300 g/m <sup>2</sup>
Acceptable Punch Paper Size	<b>2 holes</b> A3, A4, A4R, Free size (182 x 182 to 297 x 432.0 mm) <b>4 holes</b> A3, A4, Custom size, Free size (257 x 182 to 297 x 432 mm) Approx 7.7 kg
Weight	

**DOCUMENT INSERTION UNIT N1**

Number of trays	2 trays
Paper size	A3, A4, A4R, SRA3, 13"x19", Free size (182 x 182 mm to 330.2 x 487.7 mm)
Paper Weight	52 to 300 g/m <sup>2</sup>
Paper Capacity	200 sheets x 2 trays (80 g/m <sup>2</sup> )
Dimensions	(W x D x H) 336 mm (746mm including Tray) x 793 mm x 1407 mm
Weight	61 kg

**HIGH CAPACITY STACKER H1**

Paper Size	A3, A4, A4R, A5R, SRA3, 13"x19", Free size (140 x 182 mm to 330.2 x 487.7 mm)
Paper Weight	52 to 300 g/m <sup>2</sup>
Output Capacity	<b>Stack tray</b> Top Tray 6,000 sheets (80 gsm) in two stacks of 3,000 sheets each <b>200 sheets</b>
Dimensions	(W x D x H) 899 mm x 792 mm x 1,040 mm
Weight	Approx. 120 kg

**PAPER FOLDING UNIT J1**

Z-Fold	<b>Paper size</b> A3, A4R <b>Paper weight</b> 52 to 105 g/m <sup>2</sup>
C-Fold	A4R 52 to 105 g/m <sup>2</sup>
Accordion Z-fold	A4R 52 to 105 g/m <sup>2</sup>
Double parallel	A4R 52 to 90 g/m <sup>2</sup>
Half fold	A4R 52 to 105 g/m <sup>2</sup>
Output Capacity	C-Fold and Accordion Z-fold: 40 sheets, Double parallel: 25 sheets 336 mm x 793 mm x 1190 mm Approx. 71 kg
Dimensions	(W x D x H)
Weight	

**PERFECT BINDER E1**

Booklet size	<b>Width</b> 203 to 297 mm <b>Length</b> 138 to 216 mm
Booklet thickness	Up to 25 mm
Cutting Range	<b>Top/bottom</b> 6.5 to 39.5 mm at each edge <b>Foreedge</b> 6.5 to 49.5 mm
Body pages	<b>Number of sheets</b> 10 to 200 sheets (75 g/m <sup>2</sup> ), plus Cover <b>Sizes</b> Width: 257 to 320 mm, Length: 182 to 228.6 mm <b>Paper weight</b> 60 to 163 g/m <sup>2</sup> * (* 106 to 163 g/m <sup>2</sup> : up to 10 sheets as inserted paper)
Cover	<b>Number of sheets</b> 1 sheet <b>Sizes</b> Width: 257 to 330.2 mm, Length: 364.0 to 487.7 mm <b>Paper weight</b> 91 to 300 g/m <sup>2</sup> Approx. 127 mm or total approx. 1,000 sheets of paper as a total 922 x 791 x 1,300 mm 306 kg 240V, 2.6A
Tray capacity	
Dimensions	
Weight	
Power	

**eMAINTENANCE**

Take control of your Canon device fleet and reduce administration burdens with eMaintenance. With less downtime and easy maintenance, you will have longer uptime and greater productivity.

For information on full accessories and other server specifications, kindly refer to the product information at [www.canon-asia.com](http://www.canon-asia.com).



**#UNLEASHPRINT**



---

## **SOUTH & SOUTHEAST ASIA REGIONAL HEADQUARTERS**

**CANON SINGAPORE PTE. LTD.**

1 Fusionopolis Place Galaxis #15-10 Singapore 138522

Tel: +65-6799 8888 | Fax: +65-6799 8882 | [www.canon-asia.com](http://www.canon-asia.com) | [www.canon.com.sg](http://www.canon.com.sg)

---

## **CANON SALES SUBSIDIARIES & BUSINESS PARTNERS**

### **HONG KONG**

Canon Hongkong Co. Ltd  
19/F, The Metropolis Tower  
10 Metropolis Drive,  
Hung Hom, Hong Kong.  
Tel : 852 3191 2388  
Fax : 852 2369 3800  
[www.canon.com.hk](http://www.canon.com.hk)

### **PHILIPPINES**

Canon Marketing (Philippines), Inc.  
7/F Commerce and Industry Plaza,  
1030 Campus Avenue Corner  
Park Avenue, McKinley Hill,  
Fort Bonifacio Taguig City,  
Metro Manila Philippines 1634  
Tel : 632-884 9000/884 9090  
Fax : 632-884 9035  
[www.canon.com.ph](http://www.canon.com.ph)

### **THAILAND**

Canon Marketing (Thailand) Co. Ltd  
98 Sathorn Square Office Tower,  
21st - 24th Floor,  
North Sathorn Road,  
Silom, Bangrak,  
Bangkok 10500  
Tel : 66-2-344 9999  
Fax : 66-2-344 9939  
[www.canon.co.th](http://www.canon.co.th)

### **MALAYSIA**

Canon Marketing (Malaysia) Sdn. Bhd  
Block D, Peremba Square  
Saujana Resort Section U2,  
40150 Shah Alam  
Selangor Darul Ehsan, Malaysia  
Tel : 60-3-7844 6000/  
7845 0055  
Fax : 60-3-7844 6196/6198  
[www.canon.com.my](http://www.canon.com.my)

### **INDONESIA**

PT Samafitro  
Jalan Ir. H Juanda No. 8  
Jakarta 10120,  
Indonesia  
Tel : 61-21-2949 5500  
Fax : 62-21-384 4271  
[www.samafitro.co.id](http://www.samafitro.co.id)

### **VIETNAM**

Canon Marketing (Vietnam) Co. Ltd  
Level 10, President Place,  
93 Nguyen Du, Dist 1,  
Ho Chi Minh City, Vietnam  
Tel : 84-8-3820 0466  
Fax : 84-8-3820 0477  
[www.canon.com.vn](http://www.canon.com.vn)

### **INDIA**

Canon India Private Limited  
7th Floor, Tower B,  
Building # 5,  
DLF Epitome, DLF Phase III,  
Gurgaon 122002  
Tel : 91-124-4160000  
Fax : 91-124-4160011  
[www.Canon.co.in](http://www.Canon.co.in)

### **TAIWAN**

Canon Marketing (Taiwan) Co. Ltd  
19F, No. 100, Sec. 2 Roosevelt Road,  
Taipei, Taiwan, R.O.C.  
Tel : +886-2-6632-8888  
Fax : +886-2-7725-5860  
[www.canon.com.tw](http://www.canon.com.tw)