

Xerox® WorkCentre™
7220/7225
A3
Colour
Multifunction Printer



Xerox® WorkCentre™ 7220/7225 Multifunction Printer

Meet today's tasks, build tomorrow's opportunities.





Growing your business means being smart about the way you work. It involves acquiring technology that can boost productivity, simplify tasks and keep costs in check.

It requires finding new efficiencies, safeguarding critical information and providing creative and timely solutions for your customers.

To achieve this, you need a true partner on your side that can deliver complete solutions for today's most critical business problems – and keeping you one step ahead of future needs.

Growing your business starts right here, right now, with the solutions enabled by the Xerox® ConnectKey® Technology and our Xerox® WorkCentre™ 7220/7225.



Discover real cost savings.

Your business depends on keeping costs in check. With Xerox, you can gain an important competitive advantage with innovative tools that help you save time, control costs, simplify the way you manage printing in your office, and get a significant return on your investment.

Affordable colour that makes an impact.

With the Xerox® WorkCentre™ 7220/7225, you'll impress your customers – with colour that's as bold as it is affordable.

- **Customise your print driver settings for economy and efficiency.** For example, choose N-up for printing multiple pages on a single sheet as your default. Adjust settings for specific applications, such as always printing emails in black and white.
- **Print responsibly.** By default, our print driver is set to two-sided printing, and the Earth Smart feature allows you to select other default settings that encourage responsible usage, such as no printing banner pages.

- **Easy, accurate billing.** WorkCentre 7220/7225 devices connect to the network to automatically submit meters reads and automate supplies replenishment.
- **Manage and track device usage.** Xerox® Standard Accounting provides reports for greater cost control of all device functions. Advanced solutions from Xerox® Alliance Partners deliver even more helpful tools for larger office environments.
- **Connect wirelessly.** Optional Wi-Fi connectivity lets administrators connect WorkCentre 7220/7225 devices anywhere, without the need for network cabling.



Keep your costs under control.

User Permissions allow the ability to restrict access to print features by user, group, time of day or by application. For example, all Microsoft® Outlook® emails can be set to output automatically in black and white; and all PowerPoint® presentations print in colour.



Helping you find new ways to be productive.

Opportunities arise. Be ready to react with tools and technologies that can automate workflows, simplify routine tasks and take your productivity to a higher level.



Remote monitoring and management.

The Remote Control Panel feature lets you operate the Xerox® WorkCentre™ 7220/7225 user interface from any office workstation as though you were standing at the device. Remotely train users and configure device settings with the peace of mind that integrated security allows only a single authorised operation at a time to prevent multiple remote procedures.

The perfect touch for optimising your workflow.

The colour touch screen provides easy access to a wealth of workflow-optimising capabilities. A simple touch is all it takes to scan files to your USB or mobile devices, to your email account or across your network. You can even create searchable and secure PDFs, quickly and easily. The Xerox® WorkCentre™ 7220/7225 lets you do all this and more – without time-consuming and costly software and middleware add-ons.

- **Enhanced address book with favourites.** Xerox® ConnectKey® Technology enables features like the enhanced address book with favourites, which lets you seamlessly import your existing contacts and roll them out to multiple ConnectKey devices.

- **Xerox® Online Support.** Stay up and running with instant access to searchable online help right at the device's front panel.
- **Helpful walk-up features.** Embedded help videos provide quick troubleshooting assistance right on the front panel.
- **Customise your solutions.** Serverless Xerox Extensible Interface Platform® applications allow building of secure applications to run on ConnectKey-enabled multifunction printers, without the need for complex IT setup. This allows you to simplify the usability of your device with a range of capabilities from support to scanning.



Comprehensive security for complete protection.

For the success of your business, it's critical that sensitive information stays protected. That's why we deploy the most complete set of features, technologies, and solutions from security-industry leaders that minimise risk by protecting vulnerable access points and critical business information.

- **Protect your confidential information.**

Safeguard all sensitive data with encrypted PDF files for scanning; complete hard drive encryption, compliant with the 256-bit AES FIPS 140-2 standard; and Image Overwrite with a 3-pass scrub process to ensure total deletion of all data fragments.

- **Prevent unauthorised access.**

Prevent unauthorised access to the device by using network authentication with or without convenience authentication via Magstripe, proximity and Smart card (CAC/PIV/.Net) readers, Xerox® user permissions role-based and function-level login and IP Filtering.

- **Proactive threat management.**

Monitors security clearing houses for new vulnerabilities and provides patches when necessary, ensuring your equipment stays current and your data is kept safe. Plus, you can receive up-to-the-minute updates via RSS feeds and stay informed via

www.xerox.com/security.

- **Stay compliant with regulations.**

Xerox® WorkCentre™ 7220/7225 devices comply with the latest security standards across industries, including government, finance and healthcare. These include Common Criteria, HIPAA, Data Protection Act, COBIT and more. These devices can conform to any standard, with controls available to match your needs.

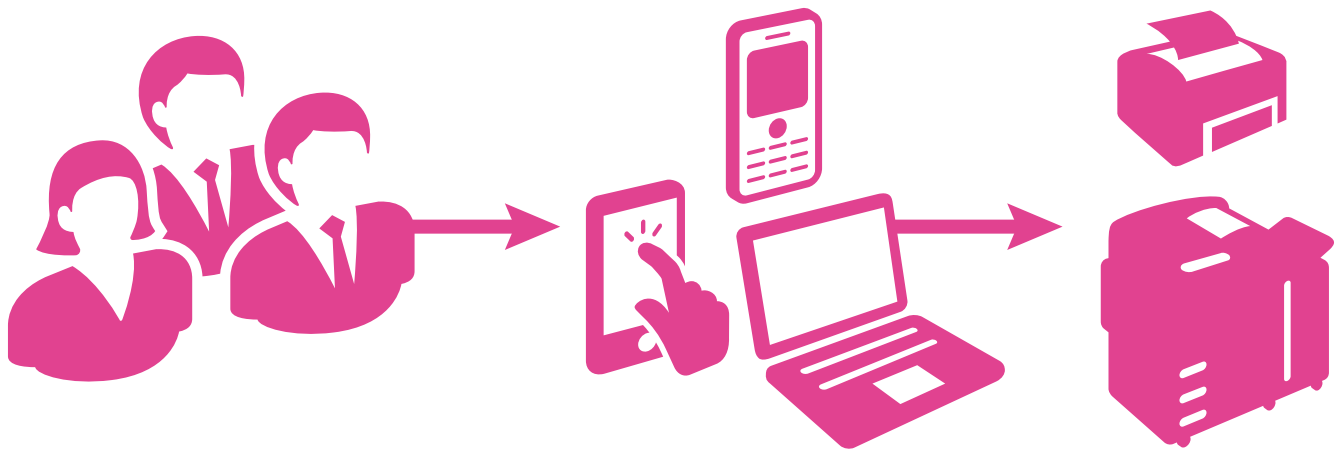
- **Gain complete visibility.** Prevent IP theft and ensure non-repudiation by having total visibility into the device and network. With security policy management and tracking of all activity on the device with Audit Log, you know who accessed what and when.



Powerful Partnerships

The WorkCentre 7220/7225 devices include McAfee® technology integration, resulting in the industry's first line up of multifunction printers that protect themselves from potential outside threats. McAfee's whitelisting technology ensures only safe, pre-approved files run on your devices, minimising the need to manually update software levels against new security threats. Also, seamless integration with the Xerox® Managed Print Services toolset and McAfee ePolicy (ePO) allows for easy tracking and monitoring.

Plus, automatic Cisco® TrustSec Identity Services Engine (ISE) integration provides comprehensive visibility of all ConnectKey®-enabled multifunction printers' endpoints to enforce IT-centric security policies and compliance.



Convenience wherever your work takes you.

Work isn't always confined to the office – and neither are you. Xerox® ConnectKey® gives you the freedom and convenience to work when you want, where you want by keeping you seamlessly connected to the productivity tools that drive your business forward.

Stay connected and productive – anytime, anywhere.

Enabled by ConnectKey®, the Xerox® WorkCentre™ 7220/7225 offers mobile printing and scanning solutions that integrate fully with cloud-based technologies and mobile devices. You'll benefit from enhanced convenience, increased productivity and more flexibility, regardless of location.

- **Apple® AirPrint.** Print email, photos and important office documents directly from your Apple iPhone® or iPad® with no drivers to install and no cables to connect. With AirPrint, your iPhone or iPad automatically locates and connects to the AirPrint-enabled WorkCentre 7200 series device over your office Wi-Fi network.
- **Mopria™ certified.** Mopria certification simplifies the mobile printing experience for tablets and smartphones to many printing devices, including the WorkCentre 7200 Series.

- **Xerox® Mobile Print and more.** Xerox has all the options to enable secure, accurate printing from most mobile devices, to any printer or multifunction printer, regardless of brand. Plus, Xerox offers IT-friendly optional capabilities such as PIN code access, multiple mobile operating systems. For more information, visit www.xerox.com/mobile.
- **Convert paper documents.** Scan documents to create text-searchable PDFs, single and multipage PDFs, and ISO standard PDF-A documents for easy archiving, organising and searching.
- **Single Touch Scan.** Use the Single Touch Scan feature to create a dedicated, easy-to-locate scan button directly on the colour touch screen interface. Assign the Single Touch Scan button its own scanning workflow for fast document distribution and archiving.

Extend Your Possibilities

Transform the way your business gets vital work done with the power of Xerox® Workflow Solutions, built on the Xerox Extensible Interface Platform®, choose the right solution that fits your business whether it's hosted within the cloud or locally on your server.

- **Xerox® ConnectKey® for SharePoint® or Xerox® ConnectKey® for DocuShare®.** Scan files directly into Microsoft® SharePoint® or DocuShare® and other Windows® folders. Plus, you can go beyond basic file storage and PDF creation by automatically converting documents to intelligent, structured data with easy file naming and routing tools.
- **Xerox® ConnectKey® Share to Cloud.** Provides easy, secure, scalable and scanning to popular cloud-based repositories such as Google Docs™, Salesforce.com, Office 365 and Dropbox™, using custom-designed workflows that leverage our Xerox Extensible Interface Platform® technology.

Learn more about Xerox® Workflow Solutions at

www.office.xerox.com/software-solutions.



Xerox® WorkCentre™ 7220/7225 Optimised for



Scanning



Wi-Fi



Security



Networking



Sustainability



Solutions

1

With a compact footprint, the WorkCentre 7220/7225 delivers more functionality while taking up less space. Add basic finishing capabilities with the Integrated Office Finisher without increasing the footprint.

2

The Duplex Automatic Document Feeder holds 110 sheets of paper.

3

50-sheet bypass tray for specialty media and sizes.

4

Choose the configuration that meets your needs: a two-520-sheet tray with stand configuration holding up to 1,040 sheets of A3 paper, or a four-tray configuration holding up to 2,080 sheets.

5

Office Finisher LX (with Booklet Maker option) provides advanced finishing functions at a value price.



Environmental Features

The WorkCentre 7220/7225 delivers cutting-edge features to help reduce energy consumption.

- **EA Toner.** Our EA Toner with ultra low-melt technology achieves minimum fusing temperature at 20 degrees C lower than conventional toner for even more energy savings and brilliant glossy output even on ordinary paper.
- **Work quietly.** Our quietest work group colour multifunction printer stays productive while emitting low noise levels.
- **LED scanner.** The power consumption of the scanner using LED lighting is 1/3 of traditional scanners using fluorescent lamps.

- **Energy Management.** With Cisco EnergyWise, enabled by Xerox® Power MIB (Management Information Base), you can control, manage and report your device's power consumption information, and set optimal power states and timeout intervals.
- **Simple to implement tools.** Helping you to control who prints what, when and how.
- **ENERGY STAR® and EPEAT qualified.** WorkCentre 7220/7225 devices meet the stringent ENERGY STAR requirements for energy use, and the EPEAT comprehensive environmental rating system.



WorkCentre 7200 series multifunction systems are enabled by the Xerox® ConnectKey® Controller. These simple-to-implement systems give you real, practical solutions that easily streamline how you communicate, process and share important information, simplify complex paper-driven tasks, and drive down costs while keeping your data secure. For more information, go to www.xerox.com/connectkey.

Device Specifications		WorkCentre 7220	WorkCentre 7225
Speed		Up to 20 ppm colour and black and white	Up to 25 ppm colour and black and white
Duty Cycle ¹		Up to 50,000 pages / month	Up to 60,000 pages / month
Hard Drive / Processor / Memory		Minimum 160 GB / 1.2 GHz Dual-core / 2 GB system plus 1 GB page memory	
Connectivity		10/100/1000Base-T Ethernet, High-Speed USB 2.0 Direct Print, Optional Wi-Fi (with Wireless Connectivity Kit)	
Controller Features		Unified Address Book, Remote Control Panel, Online Support (accessed from the user interface and print driver), Configuration Cloning	
Copy and Print			
Copy Resolution		Up to 600 x 600 dpi	
Print Resolution		Up to 2400 x 600 image quality	
First-copy-out Time (as fast as)		8.4 seconds colour / 7.1 seconds black and white from the Platen	8.7 seconds colour / 7.2 seconds black and white from the Platen
First-print-out Time (as fast as)		8.8 seconds colour / 7.0 seconds black and white	9.1 seconds colour / 7.1 seconds black and white
Page Description Languages		PCL® 5c / PCL 6, XML Paper Specification (XPS®), Adobe® PostScript® 3™ (Optional), PDF ²	
Print Features		Print from USB ² , Earth Smart Driver Settings, Job Identification, Store and Recall Driver Settings, Bidirectional Real-time Status, Colour By Words ³ , Application Defaults, Two-sided Printing (as default)	
Mobile Printing		Apple AirPrint, Xerox® Mobile Print Solution (Optional), Xerox® Mobile Print Cloud (Optional), Xerox® PrintBack, Mopria™ Certified	
Scan	Standard	Destinations: Scan to Mailbox; Scan to USB, Scan to Email, Scan to Network; File Formats: PDF, PDF/A, XPS, JPEG, TIFF; Convenience Features: Scan to Home, Single Touch Scan, Searchable PDF, Single/Multi-Page PDF / XPS / TIFF, Encrypted / Password Protected PDF, Linearised PDF / PDF/A	
	Optional	Software Packages: ConnectKey® for SharePoint®, ConnectKey® for DocuShare®, ConnectKey® Share to Cloud, Xerox® Scan to PC Desktop® SE and Professional	
Fax	Standard	Internet Fax, Fax Build Job, Network Server Fax Enablement	
	Optional	Fax Forward to Email or SMB, Walk-up Fax (one-line and two-line options, includes LAN Fax)	
Security	Standard	McAfee® Embedded, McAfee ePolicy (ePO) Compatible, Hard Drive Image Overwrite, HDD 256-bit Encryption (FIPS 140-2 compliant), Common Criteria Certification (ISO 15408), Secure Print with Timed Deletion, Secure Fax, Secure Scan, Secure Email, Cisco® TrustSec Identity Services Engine (ISE) Integration, Network Authentication, SSL, SNMPv3, Audit Log, Access Control Feature, User Permissions	
	Optional	McAfee Integrity Control, Smart Card Enablement Kit (CAC/PIV/.NET), Xerox Secure Access Unified ID System®	
Accounting	Standard	Xerox® Standard Accounting (Copy, Print, Scan, Fax, Email), Network Accounting Enablement	
	Optional	Equitrac Express®, Equitrac Office®, Equitrac Professional®, YSoft® SafeQ®	
Paper Input	Standard	Duplex Automatic Document Feeder: 110 sheets; Sizes: 148 x 210 mm to 297 x 420 mm; Custom sizes: 85 x 125 mm to 297 x 432 mm	
		Bypass Tray: 50 sheets; Custom sizes: 89 x 98 mm to 297 x 432 mm	
		WorkCentre 7220V_S/7225V_S (Trays 1 and 2 with Stand): 520 sheets each; Sizes: A5 to A3; Custom sizes: 140 x 182 mm to 297 x 432 mm	
		WorkCentre 7220V_T/7225V_T (Trays 1 – 4): 520 sheets each; Sizes: A5 to A3; Custom sizes: 140 x 182 mm to 297 x 432 mm	
	Optional	Envelope Tray: Up to 60 envelopes: DL, C5; Custom sizes: 98 x 148 mm to 162 x 241 mm	
Paper Output / Finishing	Standard	Dual Catch Trays: 250-sheets each, Lower tray offsets	
	Optional	Integrated Office Finisher: 500-sheet stacker, 50 sheets stapled, single-position stapling	
		Office Finisher LX: 2,000-sheet stacker, 50 sheets stapled, 3-position stapling, optional hole-punch, optional booklet maker (score, saddle stitch) Convenience Stapler: staples 50 sheets	

¹ Maximum volume capacity expected in any one month. Not expected to be sustained on a regular basis; ² PostScript option is required to print PDFs or PostScript files from a thumb drive.

³ Only available in the optional Adobe® PostScript® 3™ driver.

For more detailed specifications, go to www.xerox.com/office/WC7200Specs. To view a product video, visit www.xerox.com. Build and configure your own Xerox® WorkCentre 7220/7225 multifunction printer at www.buildyourownxerox.com/connectkey.